

Zabbix

Redhat sans network

Example Using Manual Configuration

- Open the network configuration file for your interface (e.g., `ens3`):
`sudo vi /etc/sysconfig/network-scripts/ifcfg-ens3`
- Update the file with the following:
DEVICE=ens3
BOOTPROTO=none
ONBOOT=yes
IPADDR=192.168.122.20
PREFIX=24
GATEWAY=192.168.122.1
DNS1=192.168.2.254
- Restart the network service to apply changes:
`sudo systemctl restart Network`

`sudo hostnamectl set-hostname nouveau_nom`

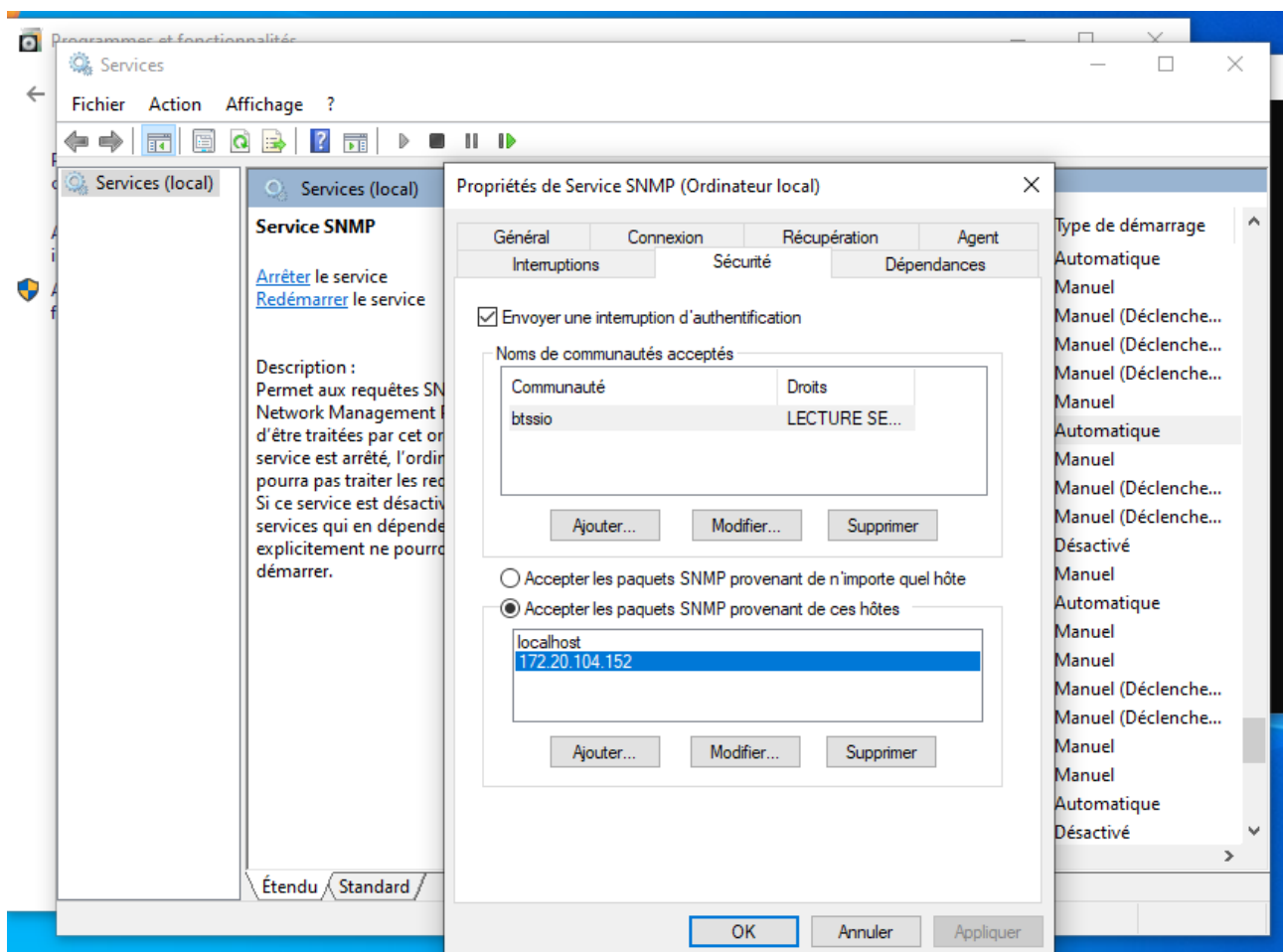
The screenshot displays the Zabbix web interface. A modal window titled "New host" is open, showing the configuration for a new host. The "Host name" field is filled with "ZabixSup". The "Visible name" field is also filled with "ZabixSup". The "Templates" dropdown is set to "Linux by SNMP". The "Host groups" dropdown is set to "Virtual machines". The "Interfaces" section shows "No interfaces are defined." with an "Add" link. The "Description" field is empty. The "Monitored by" section has "Server" selected. The "Enabled" checkbox is checked. The "Add" and "Cancel" buttons are at the bottom right of the dialog. In the background, the "Hosts" page is visible, showing a table with one entry: "Zabbix server" with IP "127.0.0.1:10050". The Zabbix version is 7.4.8, and the system is running on a Linux desktop environment.

Activer le snmp sur windows

Open **Settings > Apps > Optional Features**.

1. Click **Add a feature** and search for **Simple Network Management Protocol (SNMP)**.

Aller dans les service et chercher « service SNMP » double cliquer dessus et configurer l'onglet sécurité en ajoutant en bas l'adresse du Zabbix et en haut en ajoutant le nom de la communauté



Installer l'agent zabbix via les depot

[Zabbix/ZABBIX-installation-depuis-DEBIAN-12-de-l-agent-zabbix.md at main · 0xCyberLiTech/Zabbix · GitHub](#)

**- Superviser le service web apache installé sur la VM debian console -
Modifier le fichier de configuration Apache status.conf :**

→ Nano /etc/apache2/mods-enabled/status.conf

Configurer comme ci dessous :

```
<IfModule mod_status.c>
    <Location /server-status>
        SetHandler server-status
        Require local
        Require ip 192.168.15.0/24 #ici 0 a la fin de l'adresse pour indiquer toute les adresse
    </Location>
    ExtendedStatus On
<IfModule mod_proxy.c>
    ProxyStatus On
</IfModule>
</IfModule>
```

Modifiez le fichier de configuration Apache 000-default.conf

→ nano etc/apache2/sites-enabled/000-default.conf

Configurer comme ci dessous :

```
<VirtualHost *:80>
```

```
    ServerAdmin webmaster@localhost
```

```
    DocumentRoot /var/www/html
```

```
    ErrorLog ${APACHE_LOG_DIR}/error.log
```

```
    CustomLog ${APACHE_LOG_DIR}/access.log combined
```

```
<Location /server-status>
```

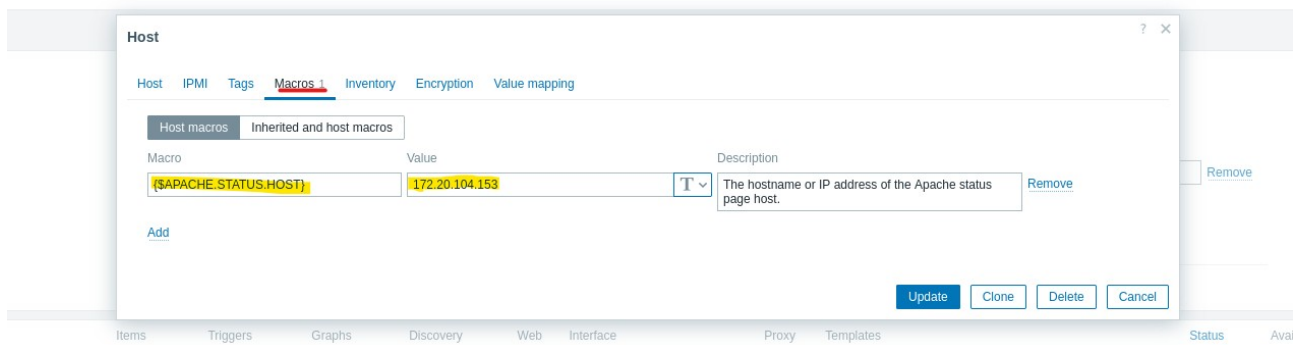
```
    SetHandler server-status
```

```
    Require local
```

```
    Require ip 192.168.15.0/24
```

```
</Location>
```

```
</VirtualHost>
```



* Host name

Visible name

Templates	Name	Actions
	Apache by HTTP	Unlink Unlink and clear
	Linux by SNMP	Unlink Unlink and clear
	<input type="text" value="type here to search"/>	<input type="button" value="Select"/>

* Host groups

Interfaces	Type	IP address	DNS name	Connect to	Port	Default
▼	SNMP	<input type="text" value="172.20.104.150"/>	<input type="text"/>	<input type="button" value="IP"/> <input type="button" value="DNS"/>	<input type="text" value="161"/>	<input checked="" type="radio"/> Remove

Configurer un Switch HP :

configure terminal

snmp-server community "" Operator

snmp-server contact "support" snmp-server location "rack de developpement"

snmp-server enable

snmpwalk -v2c -c public